

# dewpoint

A newsletter by DEW Construction Corp.

SPRING | SUMMER 2011



Photo by Westphalen Photography



## UVM's Jeffords Hall

### IN THIS ISSUE:



#### Castleton Campus Center

- Moe's Southwest Grill
- Putney School Field House



#### Hotel Jay & Waterpark

- Bennington State Office Building
- Eastview Retirement Community



#### Dartmouth Hitchcock Heater Road MOB

#### James M. Jeffords Hall *University of Vermont, Burlington, VT*

DEW provided at risk construction management services in a joint venture with The Pike Company for the new 100,000 square foot, three-story building which houses plant science laboratories, faculty offices, seminar rooms, conference rooms and classrooms. The project is registered with USGBC and was constructed as a LEED Gold certified project.

#### Project Information:

**Size:** 100,000 square feet  
**Owner:** University of Vermont  
**Architects:** Ellenzweig Associates  
Freeman French Freeman



Castleton Campus Center



Moe's Southwest Grill



Putney Field House

# DEW Projects Receive LEED™ Certification.



DEW is proud to announce three of our projects have received official LEED Certification. LEED, Leadership in Energy and Environmental Design, is the national standard and rating system for high performance (green) buildings.

## **PUTNEY FIELD HOUSE** *The Putney School, Putney, VT*

This 16,800 square foot structure houses a basketball court, weight room, yoga studio, ski waxing room, equipment storage, locker rooms and a social space.

The field house features composting toilets, rain water management, super insulation, automatic light controls, a solar hot water heater, and a state-of-the-art air-to-air heat exchange pump powered by sun-tracking photovoltaic cells - certifying the project at a **LEED Platinum** Rating. It is also the first **net-zero** educational building in the nation.

## **CASTLETON CAMPUS CENTER** *Castleton State College, Castleton, VT*

As Construction Manager, DEW completed renovations of the existing 20,850 square foot Campus Center including interior finishes, fixtures and equipment, new windows, and exterior doors. The 20,295 square foot addition consisted of a large multi-purpose room, book store, and communications academic space.

This project was designated **LEED Gold** Certification.

## **MOE'S SOUTHWEST GRILL** *Taft Corners Associates, Williston, VT*

DEW provided Design/Build services for a new 2,900 square foot restaurant. The project is the first **LEED Silver** Certified restaurant in Vermont incorporating elements of energy efficiency including a state-of-the-art mechanical system and a "cool roof."

## RECENTLY COMPLETED:

- ▶ Adirondack Medical Center  
Bariatric Office Suite Renovation  
*Saranac Lake, NY*
- ▶ Adirondack Medical Center Mercy  
Health Care Center Expansion and  
Renovations  
*Tupper Lake, NY*
- ▶ Charlebois Trucking & Premier Bus  
*Milton, VT*
- ▶ Charlotte Central School Addition  
*Charlotte, VT*
- ▶ Energizer Office Renovations  
*St. Albans, VT*
- ▶ Sustainability Academy at Lawrence  
Barnes Renovations  
*Burlington, VT*
- ▶ Country Club & Nordic Ski Center  
*Jay, VT*
- ▶ State of Vermont Archives Addition  
and Renovations  
*Middlesex, VT*

# UNDER CONSTRUCTION

## Project Information:

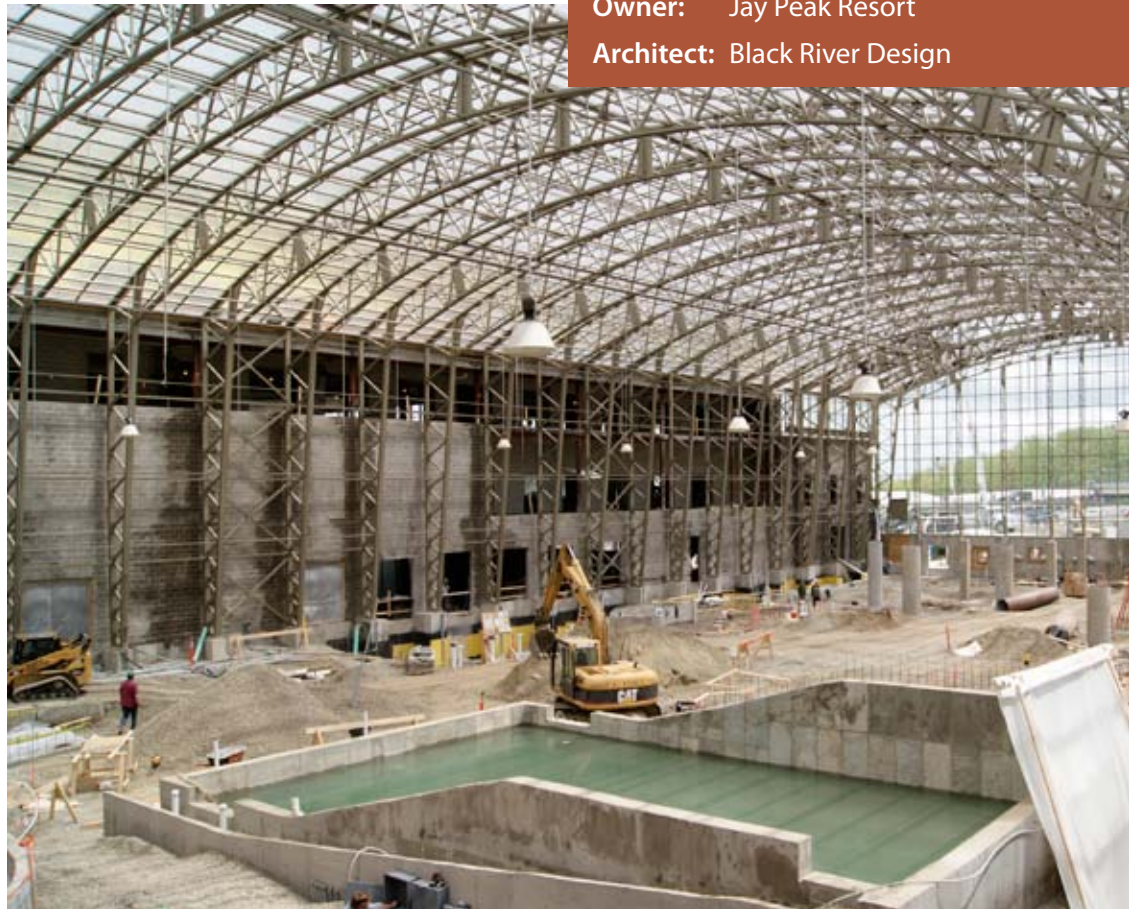
**Size:** 273,000 square feet  
**Owner:** Jay Peak Resort  
**Architect:** Black River Design

## Hotel Jay & The Pump House Indoor Waterpark

*Jay Peak Resort, Jay, VT*

The five-story Hotel Jay Conference Center and The Pump House Indoor Waterpark are located on a 13 acre site. The 230,000 sq. ft. hotel consists of 176 units (130 suites) with a restaurant, pizzeria, conference center, resort commissary kitchen, retail shops, arcade, fitness center and outdoor pool.

The 43,000 sq. ft. waterpark consists of an aluminum framed glass structure and an operable polycarbonate roof. Key components of the waterpark include: Two tube slides, a body slide, the first indoor looping speed slide in North America, a lazy and action river, and a dual Flowrider surf/boogie board machine. The project also features a rock climbing wall, kids play area, mezzanine bar, outdoor whirlpool, snack bar and private cabanas.



## Bennington State Office Building | Bennington, VT



DEW was hired to provide general contracting services for the renovation and reconstruction of the State Office Building project in Bennington, Vermont. The facility will house several state departments including: district courts, Bennington County's State Attorney's office, Department of Corrections, Agency of Human Services and the Department of Labor. A **LEED Silver** rating is anticipated for this project.

## Eastview Retirement Community | Middlebury, VT



DEW was selected as construction manager for this 90,000 square foot "Inn" building with 37 independent living apartments, 18 assisted living apartments, and 16 "special care" suites for residents with memory loss. The project also includes 30 independent living cottages.

### Project Information:

**Size:** 65,000 square feet  
**Owner:** State of Vermont  
**Architect:** William Maclay Architects

### Project Information:

**Size:** 130,000 square feet  
**Owner:** Eastview at Middlebury, Inc  
**Architect:** Gawron Turgeon Architects.

## UNDER CONSTRUCTION:

- ▶ Boltwood Place Apartments  
*Amherst, MA*
- ▶ Castleton Project 2012  
*Castleton, VT*
- ▶ Community College of VT Academic Center  
*Rutland, VT*
- ▶ Cleveland Rudman Federal Buildings Lighting Renovations  
*Concord, NH*
- ▶ GSA Office Building  
*Burke, NY*
- ▶ Penacook Family Physicians Practice  
*Concord, NH*
- ▶ Redstone Lofts at UVM  
*Burlington, VT*
- ▶ Rock Art Brewery  
*Morrisville, VT*
- ▶ VA Hospital - Polytrauma Unit  
*White River Junction, VT*
- ▶ Waterbury Fire Stations  
*Waterbury, VT*

# RECENTLY STARTED

## Dartmouth Hitchcock Heater Road MOB | Lebanon, NH



Rendering by Lavallee Brensinger Architects

This 102,000 square foot, three-story project will provide state-of-the-art services needed to meet the demanding standards of today's medical services. Each floor of the new facility will contain exam and treatment rooms, offices, and reception and waiting areas. Family medicine, general internal medicine, dermatology, the Sleep Disorder Center and a portion of outpatient rehabilitation will move to the new building when finished in fall 2012.

# NOTEWORTHY

## DEW Adds Prolog Converge, a Web-based Document Collaboration Tool for Project Delivery

### PROLOG ► Converge

Today's construction project teams face many collaboration challenges including how to bring project team members together and across different technology systems and devices. Prolog Converge, an internet based companion product to Prolog Manager 8, (DEW's Project Management Software) leverages the internet, to help increase efficiency, by enabling the entire Project Team, essentially "outside" partners

of DEW, to work in the same real-time online environment as the "inside" DEW project team.

Prolog Converge adds transparency and creates trust and respect for all team members. The implementation of Prolog Converge has provided every project with benefits far exceeding expectations.

## RECENTLY AWARDED:

- Aviation Technical Training Facility  
*South Burlington, VT*
- St. Albans City School  
Renovations  
*St. Albans, VT*
- Richmond Elementary School  
Renovations  
*Richmond, VT*
- Adirondack Medical Center  
Caesarean Delivery Room  
*Saranac Lake, NY*
- Adirondack Medical Center  
Wound Care Center  
*Lake Placid, NY*

## DEW Superintendents' Scholarship

Three years ago, DEW's superintendents decided to invest in the future of the construction industry by offering two scholarships to college bound students pursuing degrees in the construction industry. The program is funded by recycled metal from job sites. Since that time, DEW has awarded two \$2,500 VSAC scholarships each year.

DEW would like to thank this year's selection committee. (Paula Carlacinni, UVM Facilities & Development, Ken Pidgeon, ECI, Bill Nedde, Krebs & Lansing, Don Wells, DEW and Todd Poirier, DEW)

**For further information:** Matt Young, V.P. Preconstruction; 1-877-339-5234; myoung@dewcorp.com



### VERMONT

277 Blair Park Road, Suite 130  
Williston, VT 05495  
802. 872. 0505  
802. 872. 0707

### NEW HAMPSHIRE

23 South Main Street, Suite 2E  
Hanover, NH 03755  
603. 643. 1493  
603. 643. 1497